

PUSHER LEG ROCK DRILL RH 656 / 4W

HAVA

Mining and Rock Drilling Air Tools

» Intended for holes 27 to 40mm (1 1/16" - 1 36/64") in diameter. Drilling depths to about 6m (20')

RH 656 has maintained its reputation of being one of the most economical and reliable rock drills for many years. The drill has a good rate of penetration in relation to its low weight and low air consumption. The distinguishing features of the dependable design include rifle bar rotation and flushing system with double concentric tubes.

» RH 656 / 4W can also be used as a sinker

The low weight makes the RH 656/4W practical as a sinker as well. "T-handle" can easily be fitted instead of the "spade handle".



» Pusher Legs BMK 62S

The feed cylinder of steel and the rugged, simple design of the parts of the feed guarantee operation without disruptions and reduce maintenance costs to a minimum. The feed pressure is regulated with a control valve on the air inlet which is both throttle and shut-off valve. The feed pressure can be unloaded by means of a button-operated relief valve.

Data for Rock Drill RH 656 / 4W

MODEL	WEIGHT		AIR REQUIREMENT		PISTON		PISTON		IMPACT	DRILLING		HOSE CONNECTION				
	kg	lb	(at 6 bar) m ³ /MIN	(87 PSI) Cfm	Diameter		Stroke			Rate Blows/Min	Rate*		Air		Water	
					mm	Inch	mm	Inch			mm / Min	Feet / Min	mm	Inch	mm	Inch
RH656/4W	26	57	2.9	101	65	2.56	60	2.4	2050	410	1.35	19	3/4	12.7	0.5	

Drilling Rate of 33 mm Drill bit at an air pressure of 6 kg/cm². Due to varying Rock conditions, actual results may be greater or less than those listed.

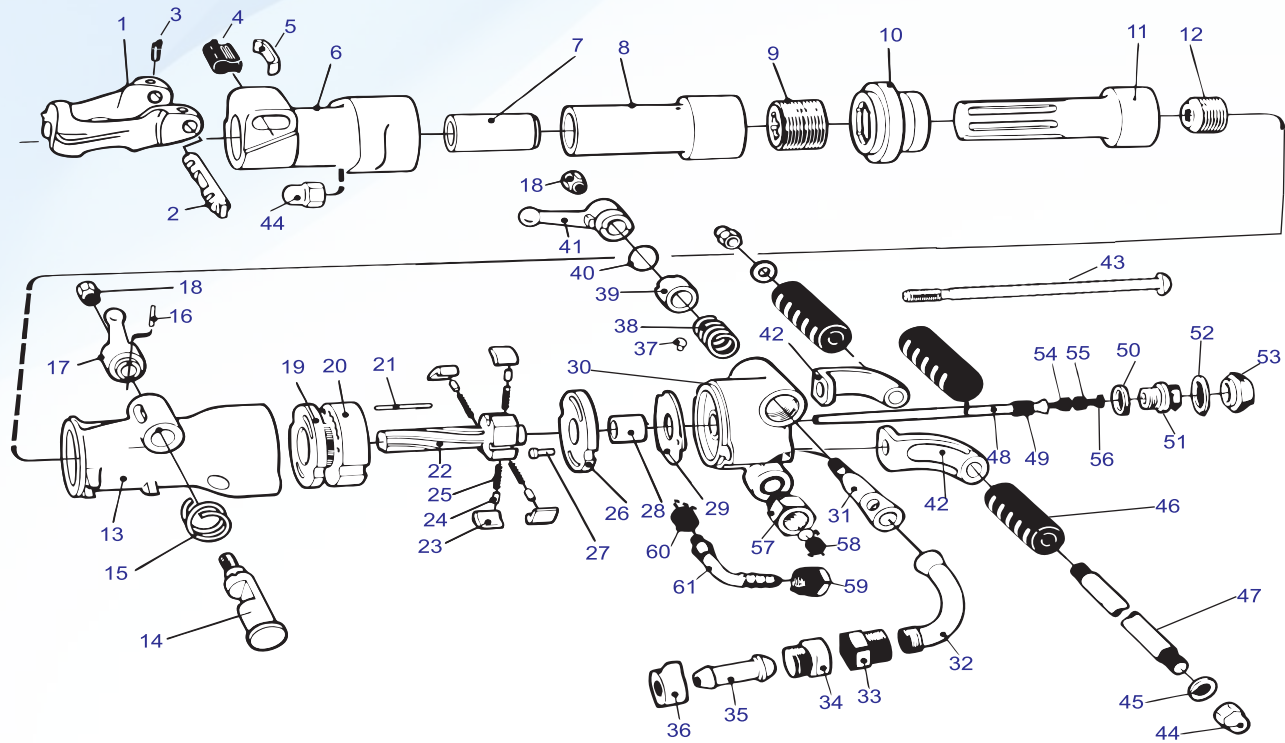
Data for Pusher Leg BMK 62 S

NET WEIGHT		LENGTH		LENGTH EXTENDED		EXTENSION LENGTH		PISTON DIAMETER	
kg	lb	mm	in	mm	in	mm	in	mm	in
17	37.5	1815	71.5	3115	124	1300	51	53	2.09

PARTS LIST OF ROCK DRILL RH 656 / 4W (WET)

HAVA

Mining and Rock Drilling Air Tools



SR.NO.	DESCRIPTION	REF NO.
1	Retainer	3121-0851
2	Retainer pin	3121-0852
3	Tension pin	0108-3392
4	Rubber Buffer	3121-0030
5	Buffer Plate	3121-0029
6	Front Head	3121-0342
7	Chuck Bushing	3121-0023
8	Rotation Chuck	3121-0769
9	Chuck Nut	3115-0769
10	Intermediate Part	3121-0339
11	Piston	3100-8478
12	Rifle Nut	3100-9299-05
13	Cylinder	3121-0337
14	Outlet Valve	3106-9949
15	Spring for Outlet Valve	3121-0338
16	Elastic Pin	0108-3330
17	Lever Handle Bottom	3106-9950
18	Conical Nut	3006-8734
19	Guide Disc	3106-8683
20	Ratchet Ring	3106-8682

SR.NO.	DESCRIPTION	REF NO.
21	Pin for Ratchet Ring	0108-1336
22	Rifle Bar	3101-3154
23	Pawl	3101-3159
24	Pawl Pin	3100-9641-01
25	Pawl Spring	3100-9140-02
26	Cover	3106-8680
27	Guide Pin	3100-9665
28	Bush for Cover	3100-9894-01
29	Main Valve	3106-8681
30	Back Head (Wet)	3115-0568
31	Throttle Valve (Wet)	3121-0331
32	Elbow (Wet)	3101-1371
33	Adopter (Wet)	3101-1370
34	Adopter (Wet)	9000-0350
35	Hose Nipple (Wet)	9000-0325
36	Wing Nut	9000-0338
37	T- Pin	3121-0329
38	Spring for Throttle Valve	3111-0136
39	Lock Washer	3121-0332
40	O-Ring	0663-2128

SR.NO.	DESCRIPTION	REF NO.
41	Lever Handle Top	3115-0573
42	Bracket Set (Left & Right)	3121-0344-45
43	Side Rod	3121-0343
44	Dome Nut	3121-0292
45	Washer	3000-0119-01
46	Rubber Grip	3101-1372
47	Handle Bolt	3121-0360
48	Air Tube (Wet)	3115-0028
49	Rubber Packing (Wet)	3000-0121
50	Seal Washer (small)	3000-9341-02
51	Adopter	3100-9623-01
52	Seal Washer (large)	3101-4146
53	Protective Nut	3100-9643-01
54	Guide Ring (Wet)	3121-0776
55	Rubber Packing (Wet)	3100-9646
56	Water Tube (Wet)	3121-0588
57	Adopter (Wet)	3121-0010
58	Packing (Wet)	3121-0012
59	Adopter (Wet)	3100-9652
60	Rubber Packing (Wet)	3100-9653
61	Hose Water Nipple (Wet)	3100-9654



HARYOCK ENGINEERING PVT. LTD.

A - 55, 'H' Block, MIDC, Pimpri, Pune - 411018 (India)

Phone : +91-20-30680044 / 55

E-mail : haryockengg@gmail.com | www.haryock.com